

PIRELLI


TRUCK BUS AGRO OTR

MORE THAN 140 YEARS OF HIGH PERFORMANCE EXCELLENCE




THERE IS NO BORDER BETWEEN YOUR TIRE AND YOUR BUSINESS


Long Haul Highway

Tire Size	Tire Picture	Marketing Line	Wheel Position	IP Code	Load Range	Loaded Radius IN (MM)	Overall Diameter IN (MM)	Overall Width IN (MM)	Approved Rim(s)	Minimum Dual Spacing	RPM (RPK)	Tread Depth 32nds (MM)	Max Speed MPH (KPH)	Max Load		Tire Weight LB (KG)	Notes
														Single LBS PSI (KG Kpa)	Dual LBS PSI (KG Kpa)		
295/75R22.5		Pentathlon D	Drive	3042600	H/16	18.8 (479)	40.5 (1028)	11.4 (290)	8.25, 9.00	13.2 (335)		25/32 (20.0)	81 (130)	7160/120 (3250/830)	6615/120 (3000/830)	129 (58.5)	Smartway Approved



On/Off Road

Tire Size	Tire Picture	Marketing Line	Wheel Position	IP Code	Load Range Ply Rating	Loaded Radius IN (MM)	Overall Diameter IN (MM)	Overall Width IN (MM)	Approved Rim(s)	Minimum Dual Spacing	RPM (RPK)	Tread Depth 32nds (MM)	Max Speed MPH (KPH)	Max Load		Tire Weight LB (KG)	Notes
														Single LBS PSI (KG Kpa)	Dual LBS PSI (KG Kpa)		
11R22.5		FG:85	All Position	2849500	H/16	19.6 (497)	41.7 (1059)	10.6 (270)	7.5, 8.25	12.4 (314)	482 (301)	23/32 (18.5)	65 (105)	6610/120 (3000/830)	6005/120 (2725/830)	133.8 (60.7)	
11R24.5		FG:85	All Position	2801600	H/16	20.6 (523)	43.6 (1107)	10.9 (277)	7.5, 8.25	12.4 (314)	463 (288)	25/32 (20.0)	65 (105)	7160/120 (3250/830)	6610/120 (3000/830)	145.7 (66.1)	
11R22.5		TG:85	Drive	2849600	H/16	19.8 (503)	42.4 (1077)	10.6 (270)	7.5, 8.25	12.4 (314)	473 (296)	28/32 (22.0)	65 (105)	6610/120 (3000/830)	6005/120 (2725/830)	140.2 (63.6)	
11R24.5		TG:85	Drive	2801700	H/16	20.6 (523)	43.9 (1116)	10.8 (275)	7.5, 8.25	12.4 (314)	459 (285)	30/32 (24.0)	65 (105)	7160/120 (3250/830)	6610/120 (3000/830)	154.7 (70.2)	
385/65 R22.5		AP:05	All Position	2416600	L/20	19.6 (498)	42.4 (1077)	14.8 (377)	11.75, 12.25	N/A	473 (296)	28/32 (22.0)	65 (105)	9925/130 (4500/900)		140.2 (63.6)	

Motorcoach

Tire Size	Tire Picture	Marketing Line	Wheel Position	IP Code	Load Range	Loaded Radius IN (MM)	Overall Diameter IN (MM)	Overall Width IN (MM)	Approved Rim(s)	Minimum Dual Spacing	RPM (RPK)	Tread Depth 32nds (MM)	Max Speed MPH (KPH)	Max Load		Tire Weight LB (KG)	Notes
														Single LBS PSI (KG Kpa)	Dual LBS PSI (KG Kpa)		
315/80R22.5		Pentathlon Coach	All Position	3080200	L/20	19.7 (500)	42.4 (1076)	12.4 (316)	9.0, 9.75	13.8 (351)	490 (304)	18/32 (14)	75.0 (120)	9370/130 (4250/900)	8820/130 (4000/900)	144.1 (65.5)	Smartway Approval In Progress

Regional

Tire Size	Tire Picture	Marketing Line	Wheel Position	IP Code	Load Range	Loaded Radius IN (MM)	Overall Diameter IN (MM)	Overall Width IN (MM)	Approved Rim(s)	Minimum Dual Spacing	RPM (RPK)	Tread Depth 32nds (MM)	Max Speed MPH (KPH)	Max Load		Tire Weight LB (KG)	Notes
														Single LBS PSI (KG Kpa)	Dual LBS PSI (KG Kpa)		
245/70 R 19.5		FR:01	All Position	2800600	H/16	15.4 (392)	33.3 (845)	9.9 (250)	6.75	10.6 (270)	502 (314)	20/32 (15.5)	81 (130)	7220/120 (3820/1007)	6670/120 (2650/1007)		
245/70 R 19.5		TR:01	Drive	2800700	H/16	15.5 (394)	33.5 (849)	9.8 (250)	7.5	11.4 (290)	496 (310)	28/32 (22.5)	81 (130)	7860/120 (4150/1007)	7310/120 (3900/1007)		

PENTATHLON™ D



Pentathlon D benefits from ECOIMPACT features, providing both customer cost efficiency and low carbon dioxide emissions, in compliance with the environmental impact regulations.

THE MOST ADVANCED PIRELLI TECHNOLOGY LANDS IN US

LONG HAUL DRIVE

1

HIGH MILEAGE

The Dual layer tread compound (DLTC) features a new external compound layer for long lasting performance.

2

ENERGY EFFICIENCY

Specialized under tread compound provides lower rolling resistance equating to lower fuel consumption and lower CO2 emissions.

3

EVEN WEAR

The optimized pattern geometry and the 3SB belts evolution enhance a durable even wear improving the durability.

4

HIGH TRACTION

Directional tread pattern assures an excellent grip on both wet and dry surfaces.

5

HIGH RETREADABILITY

SATT technology and HBW Hexa Bead Wire grant a excellent casing integrity improving durability and retreadability.

NEW

PENTATHLON™ LINE





DLTC - DUAL LAYER TREAD COMPOUND

EXTERNAL LAYER

Higher mileage
Excellent roadholding
Reduced braking distance

INTERNAL LAYER

Reduced rolling resistance
Structural integrity

DEEP SIPING STRUCTURE OF TREAD PATTERN

Traction during whole tire life
Better wet grip
Reduced braking distance
M+S marking

OPTIMIZED TREAD BLOCKS

Low rolling resistance
Longer tread life
Low Noise Generation

EJECTORS AT THE BOTTOM OF THE CENTRAL GROOVE PREVENT STONES TRAPPING



SATT™

3SB - THREE SANDWICH BELTS EVOLUTION

Enhanced even wear
Extended tire life
Retreadability
Handling



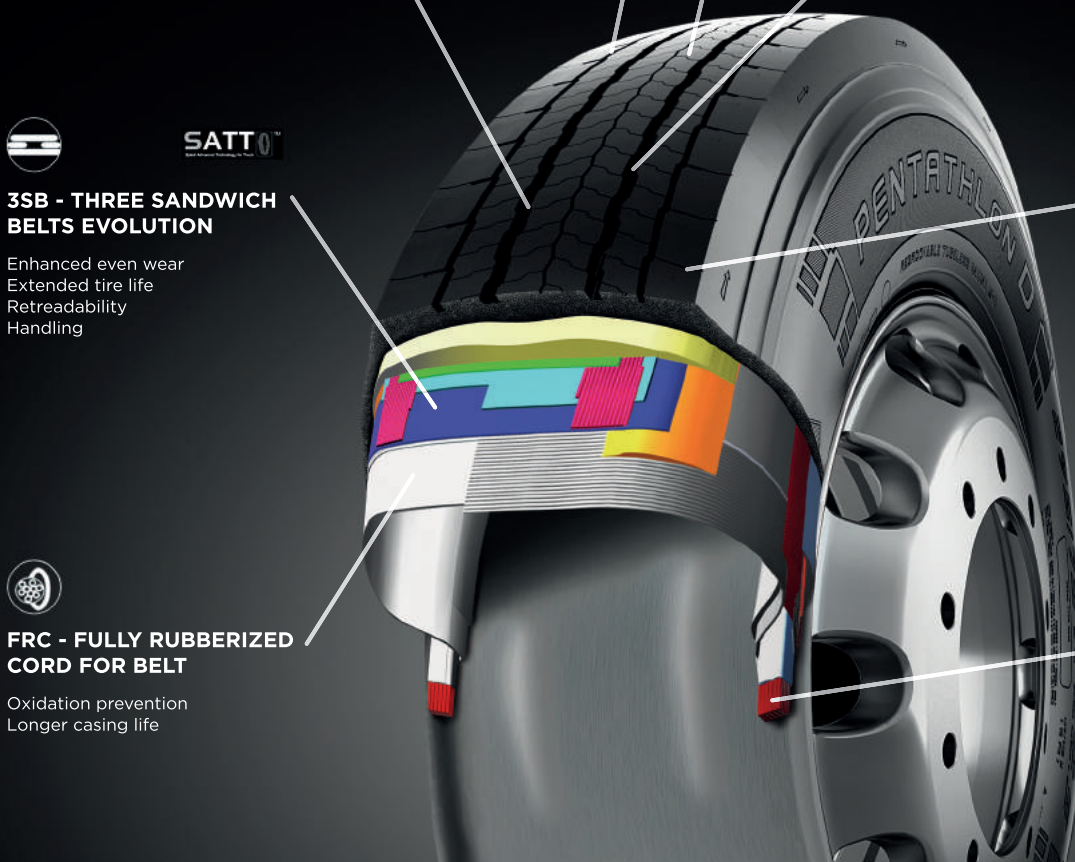
FRC - FULLY RUBBERIZED CORD FOR BELT

Oxidation prevention
Longer casing life



HBW - HEXA BEAD WIRE

High flexibility for easy mounting
Bead thermal stability and durability
Retreadability



PENTATHLON D

TIRE SIZE	MARKETING LINE	LOAD RANGE	LOADED RADIUS IN (MM)	OVERALL DIAMETER IN (MM)	OVERALL WIDTH IN (MM)	APPROVED RIM(S)	MINIMUM DUAL SPACING IN (MM)	RPM (RPK)	TREAD DEPTH 32NDS (MM)	MAX SPEED MPH (KMH)	MAX LOAD	
											SINGLE LBS/PS (KG/KPA)	DUAL LBS/PSI (KG/KPA)
295/75 R22.5	Pentathlon D	H/16	18,8	40,5	11,4	8.25, 9.00	13,2	515	25/32	81	7160/120	6610/120
			(479)	(1030)	(290)		(335)	(320)	(20,0)	(130)	(3250/830)	(3000/830)

NEW

PENTATHLON™ LINE



PENTATHLON™ COACH



PERFORMANCE AND COMFORT MILE AFTER MILE

SmartWay
Verified



Pentathlon Coach benefits from ECOIMPACT features, providing both customer cost efficiency and low carbon dioxide emissions, in compliance with the environmental impact regulations.

LONG HAUL, REGIONAL, MOTOR COACH ALL POSITION

1

HIGH MILEAGE

The Dual layer tread compound (DLTC) features a new external compound layer for long lasting performance.

2

ENERGY EFFICIENCY

Specialized under tread compound provides lower rolling resistance equating to lower fuel consumption and lower CO2 emissions.

3

EVEN WEAR

The optimized pattern geometry and the 3SB belts evolution enhance a durable even wear improving the durability.

4

OUTSTANDING HANDLING AND COMFORT

Optimized carcass and belt construction (3SB) combined with the tread pattern design assure low noise level, outstanding handling and comfort in every road condition.

5

HIGH RETREADABILITY

SATT technology and HBW Hexa Bead Wire grant an excellent casing integrity improving durability and retreadability.

NEW

PENTATHLON™ LINE



PENTATHLON™ COACH

FEATURES & BENEFITS



DLTC - DUAL LAYER TREAD COMPOUND

EXTERNAL LAYER

Higher mileage
Excellent roadholding
Reduced braking distance

INTERNAL LAYER

Reduced rolling resistance
Structural integrity

INNOVATIVE GROOVE GEOMETRY

Steering precision
Progressive response

INNOVATIVE SHOULDER TREAD CONTOUR (PIRELLI PATENT) ALLOWS A CORRECT DISTRIBUTION OF FOOTPRINT CONTACT PRESSURE

Even wear
Higher mileage



SATT

3SB - THREE SANDWICH BELTS EVOLUTION

Enhanced even wear
Extended tire life
Retreadability
Handling



FRC - FULLY RUBBERIZED CORD FOR BELT

Oxidation prevention
Longer casing life



HBW - HEXA BEAD WIRE

High flexibility for easy mounting
Bead thermal stability and durability
Retreadability



TIRE SIZE	MARKETING LINE	LOAD RANGE	LOADED RADIUS IN (MM)	OVERALL DIAMETER IN (MM)	OVERALL WIDTH IN (MM)	APPROVED RIM (S)	MINIMUM DUAL SPACING IN (MM)	RPM (RPK)	TREAD DEPTH 32NDS (MM)	MAX SPEED* MPH (KMH)	MAX LOAD	
											SINGLE LBS/PSI (KG/KPA)	DUAL LBS/PSI (KG/KPA)
315/80 R22.5	COACH	L/20	19,7	42,4	12,4	9.0, 9.75	13,8	490	18/32	75,0	9370/130	8820/130
			(500)	(1076)	(316)		(351)	(304)	(14)	(120)	(4250/900)	(4000/900)

"No bus shall be operated with regrooved, recapped or retreaded tires on the front wheels." US Code of Federal Regulations: Title 49, Transportation; Part 393.75.
(*) Exceeding the lawful speed limit is neither recommended nor endorsed.

May 2017 edition. Prometeon Tyre Group reserves the right to modify the contents of this publication without prior notice. Copyright (c) 2017 Prometeon Tyre Group S.r.l.
The PIRELLI logo, **COACH**, **SATT**, **PENTATHLON** are trademarks of the Pirelli Group used under license.

NEW

PENTATHLON™ LINE

PROMETEON.COM



FR / TR 01 Line For Regional And Long Haul Service



FR01 – TR01

- ❖ Open Shoulder Tread For Maximum Traction On All Road Surfaces
- ❖ Deep Tread Depth For Maximum Mileage Performance
- ❖ Solid Shoulder Rib For Improved Handling Characteristics And Agile Maneuverability

Tire Size	Marketing Line	IP Code	Load Range	Loaded Radius IN (MM)	Overall Diameter IN (MM)	Overall Width IN (MM)	Approved Rim(s)	Minimum Dual Spacing	RPM (RPK)	Tread Depth 32nds (MM)	Max Speed MPH (KPH)	Max Load		Tire Weight LB (KG)
												Single LBS PSI (KG Kpa)	Dual LBS PSI (KG Kpa)	
11R22.5	FR:01	2912500	H/16	19.2 (488)	41.5 (1053)	11.1 (281)	7.5, 8.25	12.5 (318)	502 (314)	20/32 (15.5)	75 (120)	6945/120 (3150/830)	6395/120 (2900/830)	125 (57.0)
11R22.5	TR:01	2912600	H/16	19.4 (494)	42.0 (1066)	11 (280)	7.5, 8.25	12.5 (318)	496 (310)	28/32 (22.5)	75 (120)	6945/120 (3150/830)	6395/120 (2900/830)	134 (61.0)

TG85



DESIGNED TO RESIST, MADE TO LAST

ON-OFF ROAD DRIVE



TG85 is dedicated to mixed use vehicles operating on roads, construction sites, and under aggressive tread-wear conditions, fitting drive axles. Its structure, engineered to resist to extreme stress factors, enhances structural **integrity**, great **resistance to laceration** and **high retreadability**.

G85 LINE



TG85

FEATURES & BENEFITS

ROBUST SHOULDER BLOCKS AND MASSIVE CENTRAL RIB

Resistance against tears and laceration

INCREASED UNDERTREAD

Reduced possibility of accidental casing damage.
Longer tire life

SPECIAL TREAD COMPOUND FORMULATED TO PROVIDE LOWER OPERATING TEMPERATURES

Tire integrity and retreadability
Increased mileage in both on and off road solutions

SIDEWALL PROTECTION RIBS

WIDE AND DEEP TRANSVERSAL GROOVES

Road holding and traction on slippery surfaces.

DLTC - DUAL LAYER TREAD COMPOUND

EXTERNAL LAYER
Higher mileage
Excellent roadholding
Reduced braking distance
INTERNAL LAYER
Reduced rolling resistance
Structural integrity

SATT[®]



3SB - THREE SANDWICH BELTS EVOLUTION

Enhanced even wear
Extended tire life
Retreadability
Handling

6
BWC

BEAD WRAPPED CHAFER INCREASED RESISTANCE

Better retreadability



TG85



TG85

TIRE SIZE	MARKETING LINE	LOAD RANGE	LOADED RADIUS IN (MM)	OVERALL DIAMETER IN (MM)	OVERALL WIDTH IN (MM)	APPROVED RIM(S)	MINIMUM DUAL SPACING IN (MM)	RPM (RPM)	TREAD DEPTH 32NDS (MM)	MAX SPEED MPH (KMH)	MAX LOAD	
											SINGLE LBS/PSI (KG/KPA)	DUAL LBS/PSI (KG/KPA)
11R22.5	TG:85	H/16	19,8 (503)	42,4 (1077)	10,6 (270)	7.5, 8.25	12,4 (314)	473 (296)	28/32 (22,0)	65 (105)	6610/120 (3000/830)	6005/120 (2725/830)
11R24.5	TG:85	H/16	20,6 (523)	43,9 (1116)	10,8 (275)	7.5, 8.25	12,4 (314)	459 (285)	30/32 (24,0)	65 (105)	7160/120 (3250/830)	6610/120 (3000/830)

G85 LINE



FG85



DESIGNED TO RESIST, MADE TO LAST

ON-OFF ROAD STEER ALL POSITION



All position tire, FG85 is dedicated to mixed use vehicles operating on roads, construction sites, and under aggressive tread-wear conditions. Its structure, engineered to resist to extreme stress factors, enhances structural **integrity**, great **resistance to laceration** and **high retreadability**.

G85 LINE



FG85

FEATURES & BENEFITS

ROBUST CIRCUMFERENTIAL RIBS, ROUNDED CONTOUR AND TREAD GROOVE PROFILE

Resistance to laceration and stone trapping

ZIG-ZAG LONGITUDINAL GROOVES AND WIDE TRANSVERSAL SHOULDER GROOVES

Enhanced traction and grip on any surface.
Roadholding

TREAD COMPOUND SPECIALLY FORMULATED TO PROVIDE LOWER OPERATING TEMPERATURE

Tire integrity
Retreadability

OPTIMUM TREAD DEPTH AND INCREASED UNDERTREAD

Longer tire life
Reduced possibility of casing damage
Mileage

SATT[®]



3SB - THREE SANDWICH BELTS EVOLUTION

Enhanced even wear
Extended tire life
Retreadability
Handling

DLTC - DUAL LAYER TREAD COMPOUND

EXTERNAL LAYER
Higher mileage
Excellent roadholding
Reduced braking distance

INTERNAL LAYER
Reduced rolling resistance
Structural integrity

6
BWC

BEAD WRAPPED CHAFER INCREASED RESISTANCE

High flexibility for easy mounting
Bead thermal stability and durability
Retreadability



FG85

TIRE SIZE	MARKETING LINE	LOAD RANGE	LOADED RADIUS IN (MM)	OVERALL DIAMETER IN (MM)	OVERALL WIDTH IN (MM)	APPROVED RIM(S)	MINIMUM DUAL SPACING IN (MM)	RPM (RPK)	TREAD DEPTH 32NDS (MM)	MAX SPEED MPH (KMH)	MAX LOAD	
											SINGLE LBS/PSI (KG/KPA)	DUAL LBS/PSI (KG/KPA)
11R22.5	FG:85	H/16	19,6 (497)	41,7 (1059)	10,6 (270)	7.5, 8.25	12,4 (314)	482 (301)	23/32 (18,5)	65 (105)	6610/120 (3000/830)	6005/120 (2725/830)
11R24.5	FG:85	H/16	20,6 (523)	43,6 (1107)	10,9 (277)	7.5, 8.25	12,4 (314)	463 (288)	25/32 (20,0)	65 (105)	7160/120 (3250/830)	6610/120 (3000/830)

G85 LINE



385/65 R22.5 Load Range L AP 05

On/Off Road														Max Load		
Tire Size	Tire Picture	Marketing Line	Wheel Position	IP Code	Load Range Plv Rating	Loaded Radius IN (MM)	Overall Diameter IN (MM)	Overall Width IN (MM)	Approved Rim(s)	Minimum Dual Spacing	RPM (RPK)	Tread Depth 32nds (MM)	Max Speed MPH (KPH)	Single LBS PSI (KG Kpa)	Dual LBS PSI (KG Kpa)	Tire Weight LB (KG)
385/65 R22.5		AP:05	All Position	2416600	L/20	19.6 (498)	42.4 (1077)	14.8 (377)	11.75, 12.25	N/A	473 (296)	28/32 (22.0)	65 (105)	9925/130 (4500/900)		140.2 (63.6)



PROMETEON

Mixed Service All Position

❖ Robust Tire Designed To Withstand Heavy Duty Application

❖ Optimum Tread Depth And Increased Undertread To Reduce Casing Damage For Improved Mileage

❖ Tread Compound Designed To Excel At A Wide Range Of Operating Temperatures

Prometeon Tyre Group – Strictly Confidential





FH 15



THERE'S NO BORDER BETWEEN
YOUR TYRE AND YOUR
BUSINESS

Pirelli Property and Strictly Confidential



FH 15

Pirelli FH 15 (front Highway – All Position)

- 17/32
- Cut & Chip Resistant Compound
- Production: Turkey
- Single
 - 5,675 @ 115 psi
- Dual
 - 5,510 @ 115 psi
- Max Speed
 - 75 mph

Michelin

- 18/32
- Single
 - 5,510 @ 120 psi
- Dual
 - 5,070 @ 120 psi
- Max Speed
 - 75 mph





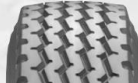



THERE'S NO BORDER BETWEEN
YOUR TYRE AND YOUR
BUSINESS




Pirelli Property and Strictly Confidential

PIRELLI
TRUCK BUS AGRO OTR




Formula Steer

												Max Load			PICTURES
Tire Size	Fitment	IP Code	Load Range	Loaded Radius IN (mm)	Overall Diameter IN (mm)	Overall Width IN (mm)	Approved Rim(s)	Minimum Dual Spacing IN (mm)	RPM (RPK)	Tread Depth 32nds (mm)	Max Speed MPH (KPH)	Single LBS PSI (kg kPa)	Dual LBS PSI (kg kPa)	Tire Weight LB (kg)	
215/75R17.5	Steer	2343200	F	14.21 (361)	30.39 (772)	8.50 (216)	6.00 6.75	9.41 (239) 9.69 (246)	683.23 (424.63)	13/32 (10.5)	81 (130)	3750@100 (1700@6.9)	3530@100 (1600@6.9)	56.7 (25.7)	
235/75R17.5	Steer	2343500	G	14.84 (377)	31.81 (808)	9.29 (236)	6.75 7.50	10.31 (262) 10.67 (271)	653.00 (405.84)	16/32 (13.0)	81 (130)	4410@110 (2000@7.6)	4190@110 (1900@7.6)	65.0 (29.5)	
275/80R22.5	Steer (On/Off)	2719200	H	18.86 (479)	40.65 (1032.6)	10.98 (279)	8.25 7.50	12.20 (311) 11.93 (303)	512.00 (318.21)	20/32 (16.0)	75 (120)	7170@125 (3250@8.6)	6615@125 (3000@8.6)	125 (57.0)	
275/80R22.5	Steer (Regional)	2262700	H	18.70 (474)	40.28 (1023)	10.98 (279)	8.25 7.50	12.20 (311) 11.93 (303)	517.00 (321.32)	18/32 (14.0)	81 (130)	7165@125 (3250@8.6)	6615@125 (3000@8.6)	118.0 (53.5)	
315/80R22.5	Steer (On/Off)	2804900	J	19.80 (503)	42.60 (1082)	12.28 (312)	9.00 9.75	13.82 (351) 14.17 (360)	489.36 (304.14)	18/32 (14.5)	68 (110)	8820@125 (4000@8.6)	7390@125 (3350@8.6)	139.3 (63.2)	
315/80R22.5	Steer (Regional)	2330600	J	19.53 (496)	42.24 (1073)	12.36 (314)	9.00 9.75	13.82 (351) 14.17 (360)	492.05 (305.81)	18/32 (14.0)	75 (120)	8820@125 (4000@8.6)	7390@125 (3350@8.6)	138.7 (62.9)	

Formula Drive

												Max Load			PICTURES
Tire Size	Fitment	IP Code	Load Range	Loaded Radius IN (mm)	Overall Diameter IN (mm)	Overall Width IN (mm)	Approved Rim(s)	Minimum Dual Spacing IN (mm)	RPM (RPK)	Tread Depth 32nds (mm)	Max Speed MPH (KPH)	Single LBS PSI (kg kPa)	Dual LBS PSI (kg kPa)	Tire Weight LB (kg)	
215/75R17.5	Drive	2343300	F	14.33 (364)	30.63 (778)	8.50 (216)	6.00 6.75	9.41 (239) 9.69 (246)	678.04 (421.41)	17/32 (13.5)	81 (130)	3750@100 (1700@6.9)	3530@100 (1600@6.9)	58.0 (26.3)	
235/75R17.5	Drive	2343600	G	14.88 (378)	31.97 (812)	9.29 (236)	6.75 7.50	10.31 (262) 10.67 (271)	649.58 (403.71)	18/32 (14.5)	81 (130)	4410@110 (2000@7.6)	4190@110 (1900@7.6)	67.7 (30.7)	
315/80R22.5	Drive (Regional)	2331900	J	19.80 (503)	42.64 (1083)	12.40 (315)	9.00 9.75	13.82 (351) 14.17 (360)	487.13 (302.76)	22/32 (17.5)	75 (120)	8820@125 (4000@8.6)	7390@125 (3350@8.6)	147.5 (66.9)	

Formula Trailer

												Max Load			PICTURES
Tire Size	Fitment	IP Code	Load Range	Loaded Radius IN (mm)	Overall Diameter IN (mm)	Overall Width IN (mm)	Approved Rim(s)	Minimum Dual Spacing IN (mm)	RPM (RPK)	Tread Depth 32nds (mm)	Max Speed MPH (KPH)	Single LBS PSI (kg kPa)	Dual LBS PSI (kg kPa)	Tire Weight LB (kg)	
215/75R17.5	Trailer	2343400	H	13.94 (354)	30.51 (775)	8.50 (216)	6.00 6.75	9.41 (239) 9.69 (246)	680.63 (423.01)	14/32 (11.5)	62 (100)	4810@130 (2180@9.0)	4545@130 (2060@9.0)	63.1 (28.6)	
235/75R17.5	Trailer	2343700	H	14.33 (364)	31.50 (800)	9.45 (240)	6.75 7.50	10.31 (262) 10.67 (271)	659.43 (409.84)	15/32 (12.0)	62 (100)	6010@125 (2725@8.6)	5680@125 (2575@8.6)	73.9 (33.5)	
385/65R22.5	Trailer	2342900	L	19.45 (494)	42.01 (1067)	14.80 (376)	11.75 12.25	-- --	497.68 (309.3)	18/32 (14.0)	68 (110)	9925@130 (4500@9.0)	-- --	155.7 (70.6)	

DRIVER II

ALL POSITION TIRE



MOVE YOUR BUSINESS SMARTLY

LONG HAUL AND REGIONAL ALL POSITION



Engineered with the experience stemming from 140 years of Pirelli Research & Development Excellence, Formula Driver II delivers great value in Mileage, Handling and Durability thanks to Pirelli SATT Technology.

Formula Driver II can be fitted on different axles on several types of vehicles.



DRIVER II *LINE*

FORMULA

DRIVER II

FEATURES & BENEFITS

MILEAGE:

Optimized tread pattern featuring siping at the edges of the grooves provides resistance to irregular wear.

SAFETY:

Large circumferential grooves combined with the optimized structure provide better handling on dry and wet conditions and better stability.

DURABILITY:

Stone ejectors elements at the bottom of the grooves prevent stones trapping improving retreadability and enhancing durability.



The SATT Technology used to design the structure of Formula Driver II is a Pirelli trademarked process that stands for Spiral Advanced Technology for Truck, engineered to enhance uniformity of wear, tire life, handling characteristics and retreadability.

AVAILABLE RANGE												MAX LOAD		
TIRE SIZE	FITMENT	IP CODE	LOAD RANGE	LOADED RADIUS IN (MM)	OVERALL DIAMETER IN (MM)	OVERALL WIDTH IN (MM)	APPROVED RIM (S)	MINIMUM DUAL SPACING IN (MM)	RPM (RPK)	TREAD DEPTH 32NDS (MM)	MAX SPEED MPH (KPH)	SINGLE LBS PSI (KG KPA)	DUAL LBS PSI (KG KPA)	TIRE WEIGHT LB (KG)
275/80R22.5	All Position	2262700	H	18,70	40,28	10,98	8,25	12.20 (311)	51700	18/32	81	7165@125	6615@125	118,0
	(Regional)			(474)	(1023)	(279)	7,50	11.93 (303)	(321,32)	(14,0)	(130)	(3250@8.6)	(3000@8.6)	(53,5)

DRIVER II *LINE*

FORMULA

NEXTROAD™

ALL POSITION



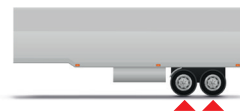
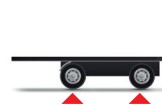
MOVE YOUR BUSINESS SMARTLY

LONG HAUL AND REGIONAL ALL POSITION



Engineered with the experience stemming from more than 100 years of Pirelli Research & Development Excellence in truck tires, Formula NEXTROAD delivers great value in Mileage, Handling and Durability thanks to Pirelli SATT Technology.

Formula NEXTROAD can be fitted on different axles on several types of vehicles.



NEXTROAD™ LINE

FORMULA

NEXTROAD™

ALL POSITION

FEATURES & BENEFITS

MILEAGE

Optimized tread pattern featuring siping at the edges of the grooves enhances even wear.

SAFETY

Large circumferential grooves combined with the optimized structure provide excellent handling on dry and wet conditions and great stability.

EVEN WEAR

The Dual Layer Tread Compound assures high mileage, low rolling resistance and long tire life.



The SATT™ Technology used to design the structure of Formula NEXTROAD is a Pirelli trademarked process that stands for Spiral Advanced Technology for Truck, engineered to enhance uniformity of wear, tire life, handling characteristics and retreadability.

AVAILABLE RANGE

											MAX LOAD	
TYRE SIZE	FITMENT	LOAD RANGE	LOAD INDEX	MAX SPEED	LOADED RADIUS	OVERALL DIAMETER	OVERALL WIDTH	APPROVED RIMS	RPM	TREAD DEPTH	PER TIRE SINGLE	PER TIRE DUAL
295/75R22.5	All position	H	149 / 146	81 mph	18.6 in	40.3 in	11.5 in	8.25"	517 rpm	18/32"	7160 lbs/120 psi	6610 lbs/120 psi
	(Regional)			130 kph	474 mm	1024 mm	291 mm	9.00"	323 rpk	14 mm	3250 kg/830 kPa	3000 kg/830 kPa

October 2017 edition. Prometeon Tyre Group reserves the right to modify the contents of this publication without prior notice. Copyright (c) 2017 Prometeon Tyre Group S.r.l. The Pirelli, Formula and SATT logos are trademarks used by Prometeon Tyre Group under license.

NEXTROAD™ LINE

FORMULA

The Product Line For Long Haul And Regional Service



PROMETEON



Best-In-Class Structure



DLTC

DUAL LAYER TREAD COMPOUND (Patent)

- ❖ Higher Mileage
- ❖ Low Rolling Resistance
- ❖ Excellent Grip
- ❖ Short Braking Distance



3SB



3 SANDWICH BELTS

- ❖ Enhanced Even Wear
- ❖ Extended Tire Life
- ❖ Great Retreadability
- ❖ Handling



BWC

BEAD WRAPPED CHAFER

- ❖ Increased Resistance
- ❖ Excellent Retreadability



RSR (*)

ROTATED SHOULDER RIB (Patent)

- ❖ Innovative Shoulder Tread Contour
- ❖ Optimized Footprint Contact Pressure

(*) Only On Sizes 11R22.5 And 285/75 R 24.5 – H89
All Position Tread Pattern



FRC

FULL RUBBERIZED CORDS (Patent)

- ❖ Great Fatigue Resistance



HBW

HEXAGONAL BEAD WIRE

- ❖ High Flexibility For Easy Fitting
- ❖ Bead Thermal Stability And Durability
- ❖ Retreadability



Dual Layer Tread Compounds

ENHANCING TIRE PERFORMANCES

TIRE LIFE AND WET GRIP

CAP TREAD COMPOUND BASED ON:

- ❖ Dual Filler Technology Blend Of Silica And Carbon Black Fillers
- ❖ Special Polymers High Molecular Weight & Functionalized Polymers

ROLLING RESISTANCE

BASE 100% SILICA COMPOUND WITH SPECIAL FILLER ACTIVATORS (PIRELLI PATENT)

- ❖ Reduced Heat Generation
- ❖ Reduced Rolling Resistance



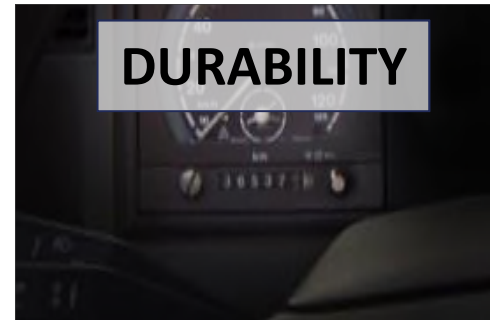
MILEAGE



WET HANDLING



DURABILITY



FUEL SAVING



PROMETEON



H89 Wheel Position Overview

H89



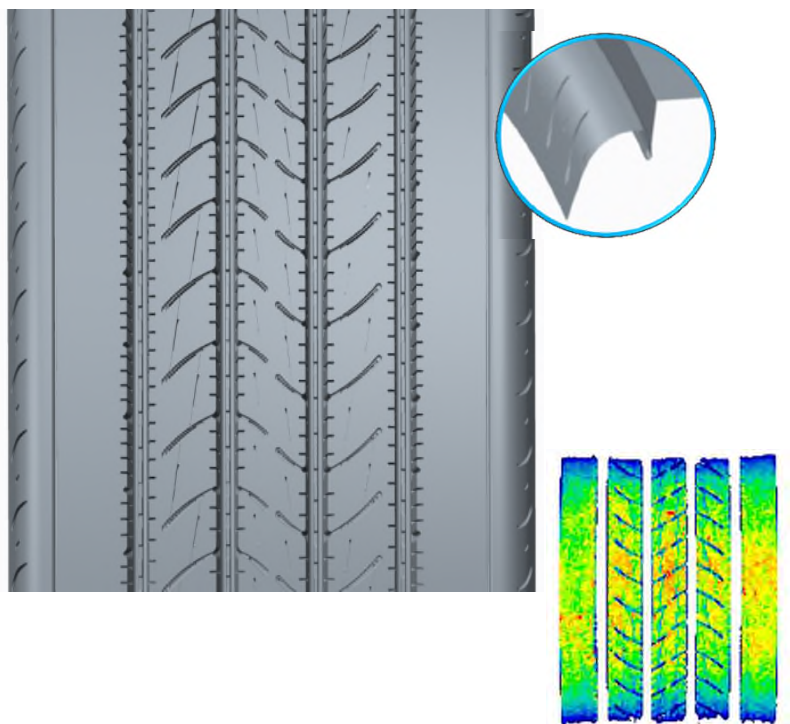
H89 DRIVE



H89 TRAILER



H89 - Steer / All Position - Fuel Efficient Tire For Long Haul/Regional Service



4 GROOVES AND ROBUST LONGITUDINAL RIBS

- ❖ Water Evacuation
- ❖ Steering Precision

OPTIMISED TREAD CONTOUR

- ❖ Even Wear
- ❖ High Mileage

TREAD GEOMETRY

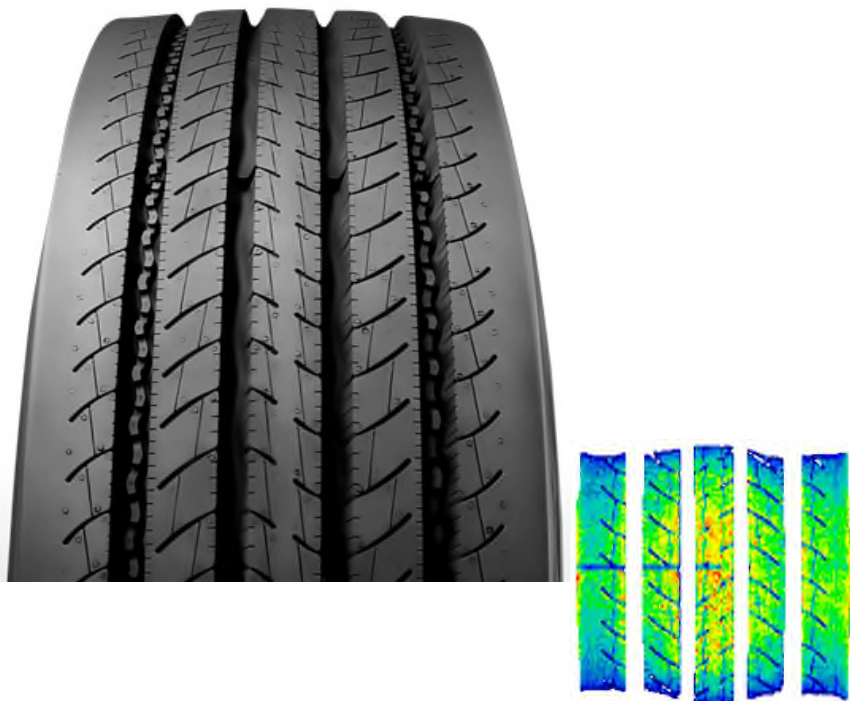
- ❖ Ejectors At The Bottom Of The Grooves Prevent Stone Trapping
- ❖ Decoupling Grooves Promote Even Wear
- ❖ Robust Shoulders Without Siping Enhance Even Wear

OPTIMIZED FOOTPRINT

- ❖ Long Tread Life
- ❖ Fuel Efficient
- ❖ Uniform Pressure Distribution

Tire Size	Marketing Line	IP Code	Load Range	Loaded Radius IN (MM)	Overall Diameter IN (MM)	Overall Width IN (MM)	Approved Rim(s)	Minimum Dual Spacing	RPM (RPK)	Tread Depth 32nds (MM)	Max Speed MPH (KPH)	MAX LOAD		Tire Weight LB (KG)	M+S	SMARTWAY
												Single LBS PSI (KG Kpa)	Dual LBS PSI (KG Kpa)			
11R22.5	H89	3263900	H/16				8.25, 7.50			18/32 (14.5)	81,0 (130)	6610/120 (3000/830)	6005/120 (2725/830)			✓
295/75R22.5	H89	TBD	G/14				8.25, 7.50			18/32 (14.5)	81,0 (130)	6175/110 (2800/760)	5675/110 (2575/760)			✓
295/75R22.5	H89	3263600	H/16				8.25, 9.00			18/32 (14.5)	81,0 (130)	7160/120 (3250/830)	6610/120 (3000/830)			✓
285/75R24.5	H89	3263300	H/16				8.25, 7.50			18/32 (14.5)	81,0 (130)	6780/120 (3075/830)	6175/120 (2800/830)			✓

H89 - Steer / All Position – Long Tread Life Tire For Long Haul/Regional Service Size 11R24.5



4 GROOVES AND ROBUST LONGITUDINAL RIBS

- ❖ Water Evacuation, Excellent Wet Handling
- ❖ Steering Precision

OPTIMISED TREAD CONTOUR

- ❖ Even Wear
- ❖ Optimized Mileage

TREAD GEOMETRY

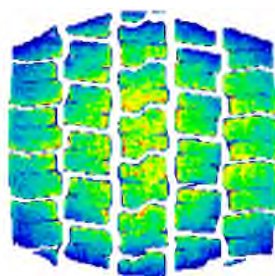
- ❖ Avoid Stone Trapping
- ❖ Prevent Lateral Stone Trapping

OPTIMIZED FOOTPRINT

- ❖ Uniform Pressure Distribution
- ❖ Long Tread Life

Tire Size	Marketing Line	IP Code	Load Range	Loaded Radius IN (MM)	Overall Diameter IN (MM)	Overall Width IN (MM)	Approved Rim(s)	Minimum Dual Spacing	RPM (RPK)	Tread Depth 32nds (MM)	Max Speed MPH (KPH)	MAX LOAD		Tire Weight LB (KG)	M+S	SMARTWAY
												Single LBS PSI (KG Kpa)	Dual LBS PSI (KG Kpa)			
11R24.5	H89	3264000	H/16	20,3	43,4	11,1	8.25, 7.50		465	19/32	81,0	7160/120	6610/120			⊘
				(516)	(1102)	(282)						(3250/830)	(3000/830)			

H89 Drive Axle - Fuel Efficient, Long Tread Life Tire For Long Haul/Regional Service



CLOSED-SHOULDER DESIGN

- ❖ Prevent Impact Damage And Promote Even Wear

WIDER GROOVES

- ❖ Prevent Stone Retention And Enhance Traction Performance On Every Road Condition

DESIGN WITH ZIG-ZAG GROOVES

- ❖ Water Expulsion
- ❖ Wet Behavior

OPTIMISED FOOTPRINT DISTRIBUTION

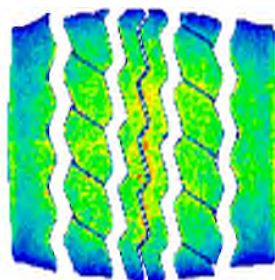
- ❖ Even Wear
- ❖ Mileage
- ❖ Low Rolling Resistance

Tire Size	Marketing Line	IP Code	Load Range	Loaded Radius IN (MM)	Overall Diameter IN (MM)	Overall Width IN (MM)	Approved Rim(s)	Minimum Dual Spacing	RPM (RPK)	Tread Depth 32nds (MM)	Max Speed MPH (KPH)	MAX LOAD		Tire Weight LB (KG)	M+S	SMARTWAY
												Single LBS PSI (KG Kpa)	Dual LBS PSI (KG Kpa)			
11R24.5	H89 DRIVE	3264100	H/16	20,5 (521)	44,0 (1117)	11,2 (284)	8.25, 7.50		459 (285)	29/32 (23)	81,0 (130)	7160/120 (3250/830)	6610/120 (3000/830)		✓	✗
11R22.5	H89 DRIVE	3263800	G/14				8.25, 7.50			26/32 (20,5)	81,0 (130)	6175/105 (2800/720)	5840/105 (2650/720)		✓	✓
295/75R22.5	H89 DRIVE	3148600	G/14				8.25, 9.00			26/32 (20,5)	81,0 (130)	6175/110 (2800/760)	5675/110 (2575/760)		✓	✓
285/75R24.5	H89 DRIVE	3263400	G/14				8.25, 7.50			26/32 (20,5)	81,0 (130)	6175/110 (2800/760)	5675/110 (2575/760)		✓	✓

PROMETEEON



H89 Trailer – Strong, High Scrub Compound Tire For Regional And Line Haul Service



4 WIDE GROOVES

- ❖ Water Expulsion
- ❖ Stone Ejection

STONE EJECTORS IN THE LATERAL GROOVE

- ❖ Protect The Bottom Of The Grooves
- ❖ Prevent Casing Damages

ZIG ZAG DESIGN

- ❖ Grip On Slippery Surfaces (M+S)
- ❖ Lateral Stability

OPTIMISED FOOTPRINT DISTRIBUTION

- ❖ High Scrub Compound
- ❖ Even Wear
- ❖ Mileage

												MAX LOAD				
Tire Size	Marketing Line	IP Code	Load Range	Loaded Radius IN (MM)	Overall Diameter IN (MM)	Overall Width IN (MM)	Approved Rim(s)	Minimum Dual Spacing	RPM (RPK)	Tread Depth 32nds (MM)	Max Speed MPH (KPH)	Single LBS PSI (KG Kpa)	Dual LBS PSI (KG Kpa)	Tire Weight LB (KG)	M+S	SMARTWAY
11R24.5	H89 TRAILER	3150900	H/16	20,2	43,2	11,1	8.25, 7.50		467	18/32	81,0	7160/120	6610/120	---	✓	⊘
				(514)	(1098)	(283)						(290)	(14)	(130)		
11R22.5	H89 TRAILER	3151000	G/14	8.25, 7.50						18/32	81,0	6175/105	5840/105	---	✓	⊘
												(14)	(130)	(2800/720)		
295/75R22.5	H89 TRAILER	3263700	G/14	8.25, 9.00						18/32	81,0	6175/110	5675/110	---	✓	⊘
												(14)	(130)	(2800/760)		

POWER IS NOTHING WITHOUT CONTROL



www.Prometeon.com

PIRELLI

TRUCK BUS AGRO OTR